



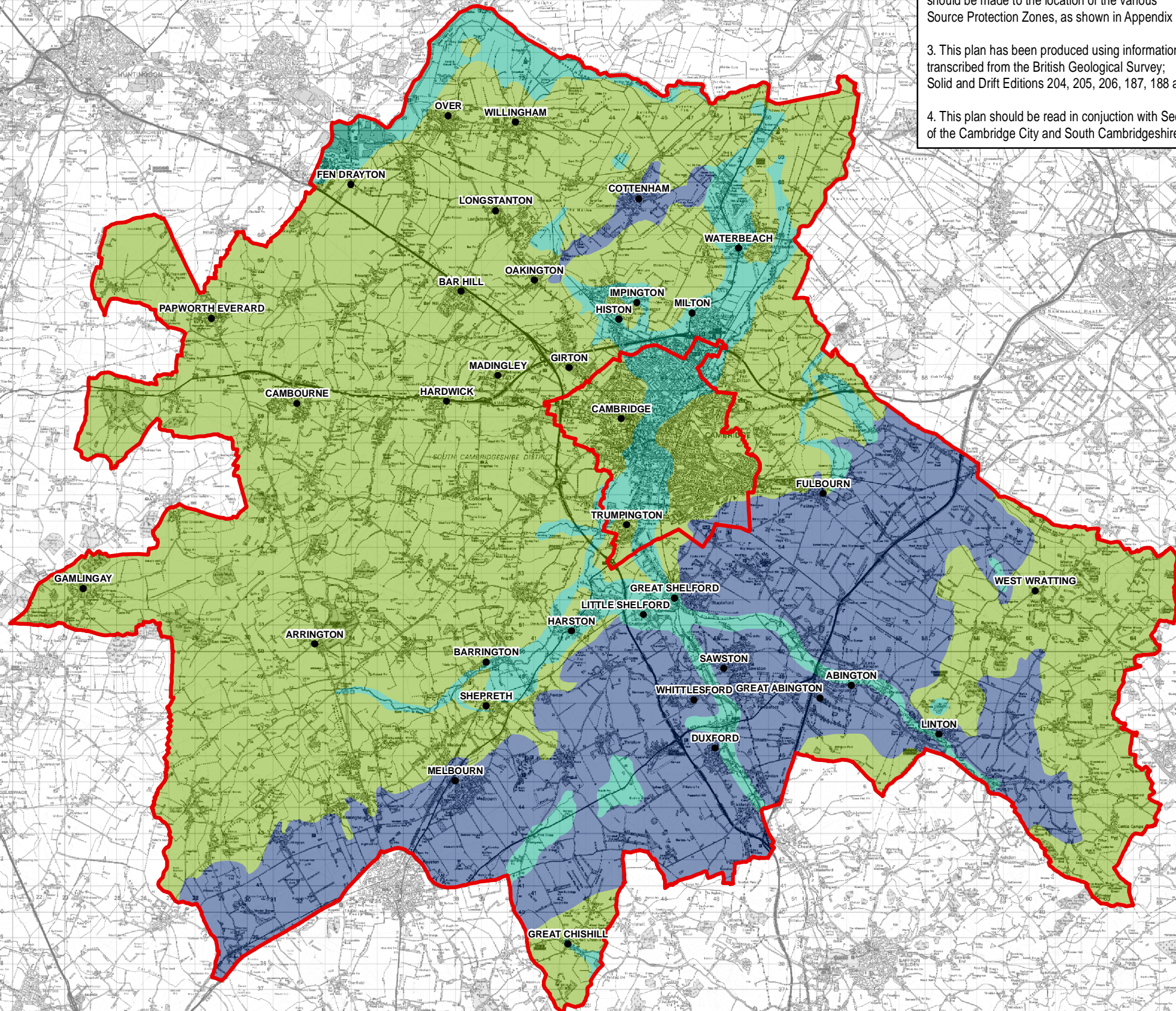




- KEY**
-  South Cambridgeshire DC & Cambridge City Council Boundaries
 -  Low Potential for Infiltration
 -  Uncertain Potential for Infiltration
 -  High Potential for Infiltration

- NOTES**
1. This drawing looks at the infiltration potential within the South Cambridgeshire and Cambridge City Boundaries. SuDS hierarchy must be applied to all potential developments. Intrusive ground investigations to determine the viability of infiltration must still be undertaken as part of a site specific FRA. Should infiltration devices prove to be unviable based on intrusive ground investigations and BRE 365 Soakage Tests then alternative SuDS should be used.
 2. In areas with potential infiltration, reference should be made to the location of the various Source Protection Zones, as shown in Appendix C.
 3. This plan has been produced using information transcribed from the British Geological Survey; Solid and Drift Editions 204, 205, 206, 187, 188 and 189.
 4. This plan should be read in conjunction with Section 8 of the Cambridge City and South Cambridgeshire SFRA.



TITLE:
**SOUTH CAMBRIDGESHIRE DC
 AND CAMBRIDGE CITY COUNCIL
 LEVEL 1 SFRA**

FIGURE No:
**SUDS INFILTRATION FEASIBILITY PLAN
 1402- C - 2**

Reproduced from Ordnance Survey data by permission of the Controller of Her Majesty's Stationary Office. © Crown copyright (2008). All rights reserved. License No. 0100022500. © 2008 NAVTEC